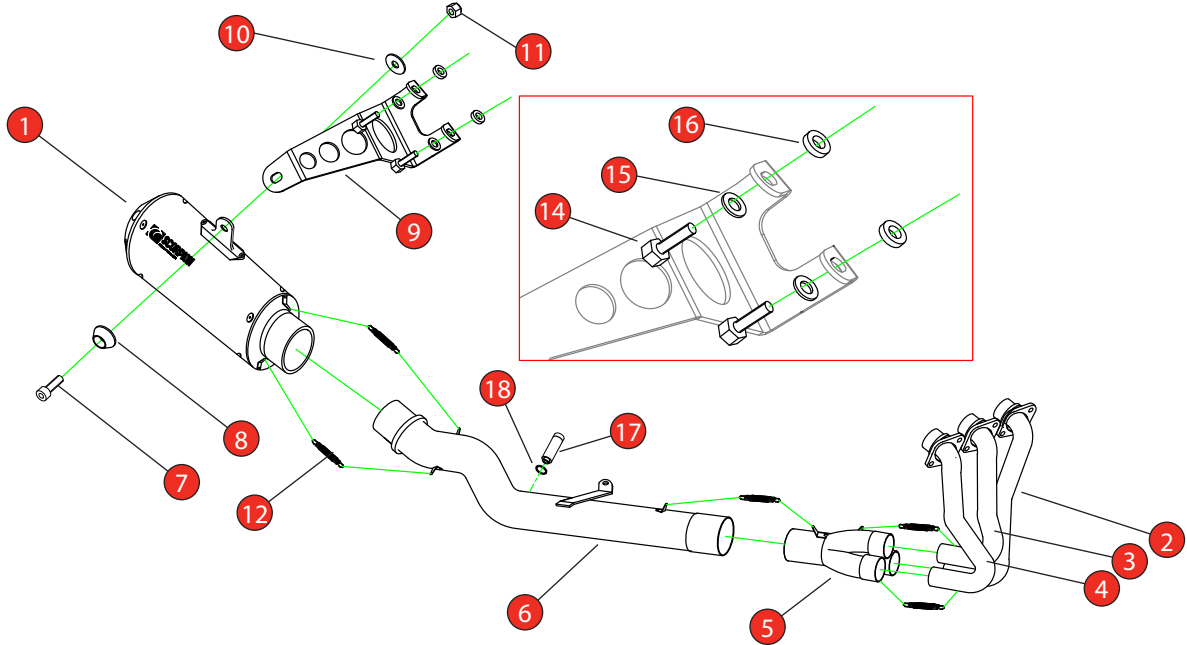


| | | | |
|--------------|--|------------------|---------------------|
| Bike | Yamaha XSR 900 GP | Part No. | PYA-127-SYS |
| Year | 2024 - Current | Fit Kit | Z039.10754 |
| Notes | Where not supplied use original fittings | dB Killer | SCEXDBK47 (TYPE PB) |

Estimated Fitting Time: 60 Minutes



| NO. | PART NO. | DESCRIPTION | QTY |
|-----------------------------|-------------|--|-----|
| 1 | PSC459 | Red Power Silencer | 1 |
| 2 | CP1128 | L/H Header Pipe | 1 |
| 3 | CP1129 | Centre Header Pipe | 1 |
| 4 | CP1130 | R/H Header Pipe | 1 |
| 5 | CP1131 | Collector | 1 |
| 6 | CP1132 | Connecting Pipe | 1 |
| Fit Kit - Z039.10754 | | | |
| 7 | Z017.10073 | M8 x 25mm Cap Head Bolt | 1 |
| 8 | Z026.20068B | Alloy Bolt Finisher Anodised Black | 1 |
| 9 | Z015.31561 | Mounting Bracket | 1 |
| 10 | Z017.10825 | M8 x 25mm Washer | 1 |
| 11 | Z017.10062 | M8 Nyloc Nut | 1 |
| 12 | Z028.10030 | Rubber Coated Spring | 5 |
| 13 | Z024.11134 | Lamda Extension Cable (Not shown) | 2 |
| 14 | Z017.10049 | M8 x 30mm Hex Bolt | 2 |
| 15 | Z017.10831 | M8 x 17mm Washer | 2 |
| 16 | Z026.20049 | M8 x 5mm Spacer | 2 |
| 17 | Z026.20185 | M12 Lambda Catalyst | 1 |
| 18 | Z017.10728 | M12 Copper Washer | 1 |
| 19 | Z017.12732 | 100 x 1.5mm Black Tie Wrap (not shown) | 1 |

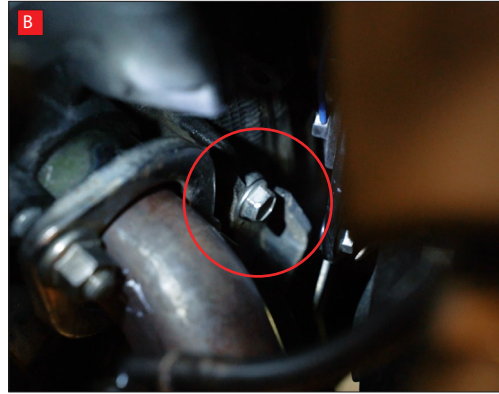
| | |
|----------------|------------------------|
| CLASSIFICATION | Closed Circuit Product |
| HOMOLOGATED | NO |
| DATE | 11/03/2025 |
| ISSUE | 00 |
| AUTHORISED | S Shipley |

NOTE: ENSURE SCORPION SYSTEM IS CLEAR OF MOVING PARTS AND ALL ORIGINAL FUNCTIONS WORK CORRECTLY.



STAY CONNECTED TO RED POWER.

| | | | |
|-------|--|-----------|---------------------|
| Bike | Yamaha XSR 900 GP | Part No. | PYA-127-SYS |
| Year | 2024 - Current | Fit Kits | Z039.10754 |
| Notes | Where not supplied use original fittings | dB Killer | SCEXDBK47 (TYPE PB) |



NOTE: These instructions show the Redpower silencer being installed, the Serket Parallel silencer fits the same way.

A) Remove both Lambda sensors from the original exhaust.

B) Remove the bolt from the radiator support bracket between the header pipes. This will allow you to move the radiator forward slightly to give better access to the header nuts.

C) Once the bolt is removed pull the pin from the mounting rubber.

D) Remove all 6 header nuts.

E) On the left hand side of the bike remove the silencer mounting bolt.

F) On the right hand side of the bike, support the weight of the exhaust then remove the silencer mounting bolt. You can now carefully remove the exhaust from the bike.

G) Remove the metal insert and rubber bush from the left hand side of the bike. This mounting isn't used with the Scorpion system.

H) On the right hand side of the bike, behind the rear foot peg, remove the 2 circled bolts, this is where the new mounting bracket will attach.

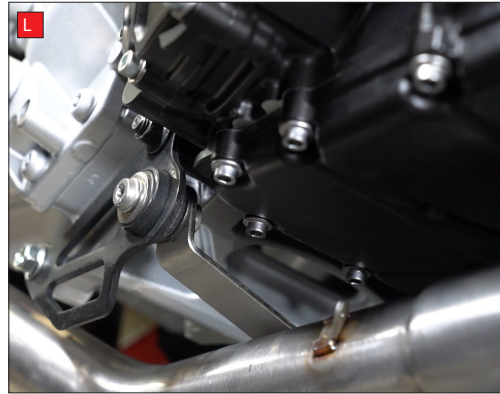
| | | | |
|-------|--|-----------|---------------------|
| Bike | Yamaha XSR 900 GP | Part No. | PYA-127-SYS |
| Year | 2024 - Current | Fit Kits | Z039.10754 |
| Notes | Where not supplied use original fittings | dB Killer | SCEXDBK47 (TYPE PB) |



I) Using the diagram on the 1st page, install the new mounting bracket with the supplied hardware. Leave the bolts loose to allow adjustment, you will fully tighten them in a later step.

J) Starting from the left loosely fit the scorpion header pipes. Do not fully tighten until the whole system is fitted.

K) Insert the header pipes into the collector.



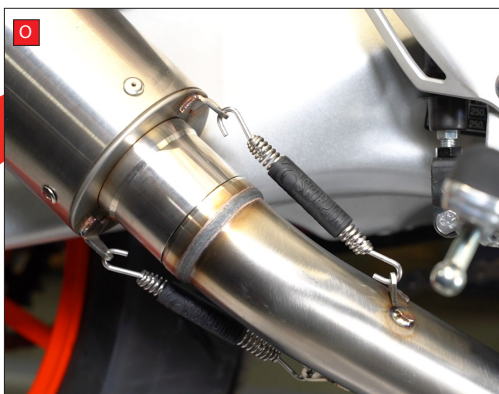
L) Fit the connecting pipe to the collector. Use the original bolt to secure the pipe to the bike. Do not fully tighten, you will do this later.

M) Slide the silencer on to the connecting pipe.



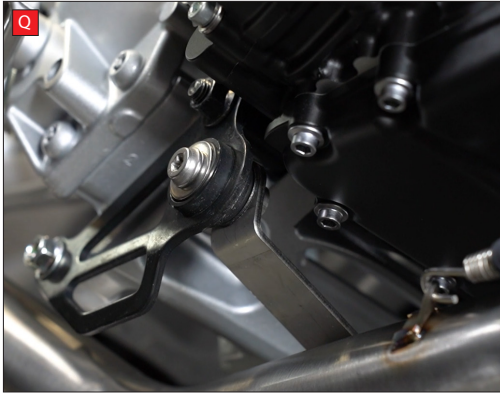
N) Align the silencer and the mounting bracket, then secure in place using the supplied hardware. Leave slightly loose for now, you will fully tighten later.

O) Install all of the supplied springs between the spring hoops.



P) Fully tighten the header nuts.

| | | | |
|-------|--|-----------|---------------------|
| Bike | Yamaha XSR 900 GP | Part No. | PYA-127-SYS |
| Year | 2024 - Current | Fit Kits | Z039.10754 |
| Notes | Where not supplied use original fittings | dB Killer | SCEXDBK47 (TYPE PB) |



Q) Fully tighten the connecting pipe mounting bolt.

R) Fully tighten the silencer to mounting bracket bolt.

S) Fully tighten the bolts securing the mounting bracket to the frame.

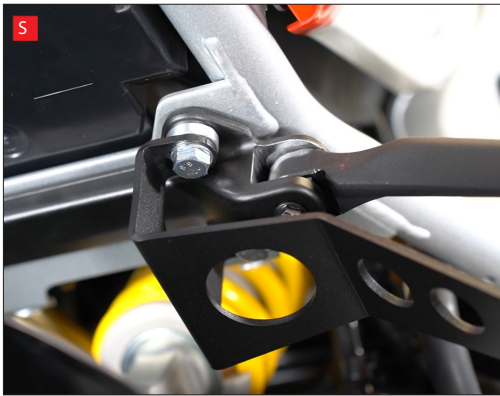
T) Remove the plastic clips from the radiator surround by pushing in the centre of the clips.

U) Remove the upper panel from the right side of the bike.

V) Followed by the upper panel from the left side of the bike.

W) On the right side of the bike, remove the bolt from the back of the front fairing.

X) Carefully pull the fairing away from the bike (you don't need to remove it) to access the plug for the Lambda sensor and disconnect it.



| | | | |
|-------|--|-----------|---------------------|
| Bike | Yamaha XSR 900 GP | Part No. | PYA-127-SYS |
| Year | 2024 - Current | Fit Kits | Z039.10754 |
| Notes | Where not supplied use original fittings | dB Killer | SCEXDBK47 (TYPE PB) |



Y) Note the route the wiring runs, then remove the sensor from the bike. The cable tie around the coolant hose is reusable, do not discard it as you will need it later.

Z) Install one of the supplied extension cables, taking the same route as the original. Secure to the coolant hose with the original cable tie.

AA) Feed the female end of the cable between the engine and the swing arm.



AB) Screw the Lambda sensor into the Lambda Catalyst, then screw the Lambda Catalyst into the rear boss on the Scorpion connecting pipe. Use the supplied copper washer and fully tighten the assembly.

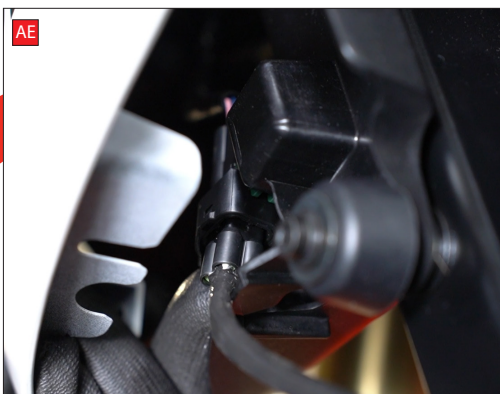
AC) Connect the sensor to the extension cable. Secure any excess cable with the supplied cable tie.



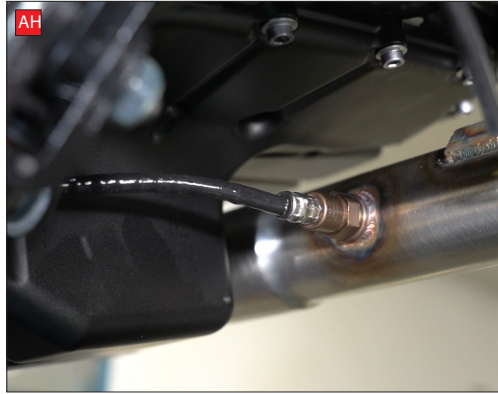
AD) On the left side of the bike, remove the bolt from the back of the front fairing.

AE) Carefully pull the fairing away from the bike (you don't need to remove it) to access the plug for the Lambda sensor and disconnect it.

AF) Cut the cable ties that hold the cable to the coolant hose. Be careful not to cut into the hose or the cable. Remove the sensor from the bike.



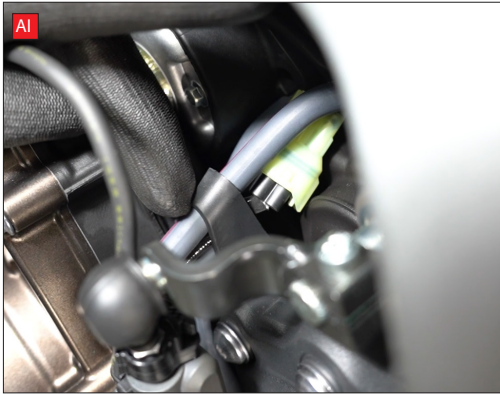
| | | | |
|-------|--|-----------|---------------------|
| Bike | Yamaha XSR 900 GP | Part No. | PYA-127-SYS |
| Year | 2024 - Current | Fit Kits | Z039.10754 |
| Notes | Where not supplied use original fittings | dB Killer | SCEXDBK47 (TYPE PB) |



AG) Route the extension cable behind the engine mount, to the top of the radiator, then down the side of the radiator to connect back up with the plug on the bike.

AH) Screw the sensor into the front boss on the Scorpion connecting pipe and fully tighten.

AI) Route the cable where the breather pipes are on the left side of the engine and connect to the extension cable.

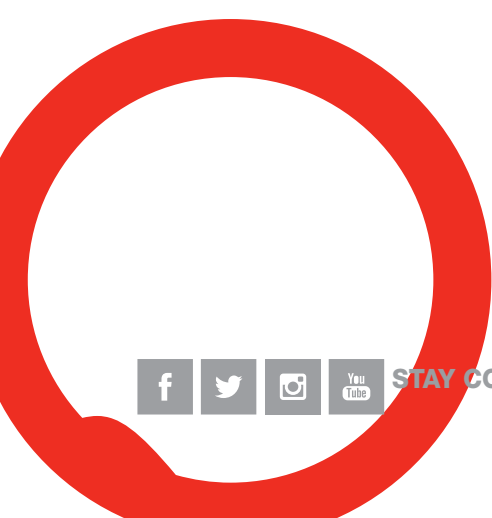


AJ) Secure the fairing back in place on both sides of the bike.

AK) Refit the plastic panels to both sides of the bike.

AL) Refit the push clips to the radiator surround.

When fitted take bike for a short ride to ensure all functions are correct. When bike & exhaust are cool enough check all nuts and bolts are still secure.



STAY CONNECTED TO RED POWER.

| | | | |
|-------|--|-----------|---------------------|
| Bike | Yamaha XSR 900 GP | Part No. | PYA-127-SYS |
| Year | 2024 - Current | Fit Kits | Z039.10754 |
| Notes | Where not supplied use original fittings | dB Killer | SCEXDBK47 (TYPE PB) |



Thank you for purchasing your Scorpion Silencer.

Care of your exhaust: Please refrain from cleaning silencer with heavy solvents or abrasives!

Vielen Dank Für den kauf eines Scorpion Schalldampfers! Pflegehinweis: Bitte verwenden Sie niemals Scheuermittel oder aggressive Reiniger zur Pflege Ihres Auspuffes!

Merci d'avoir choisi un échappement Scorpion.

Entretien de votre silencieux: Ne pas utiliser de solvants ou de produits abrasifs!

Muchas gracias por adquirir un Silencioso Scorpion. Le recomendamos no limpiar el silencioso con productos abrasivos o aquellos que contengan disolventes.



STAY CONNECTED TO RED POWER.